



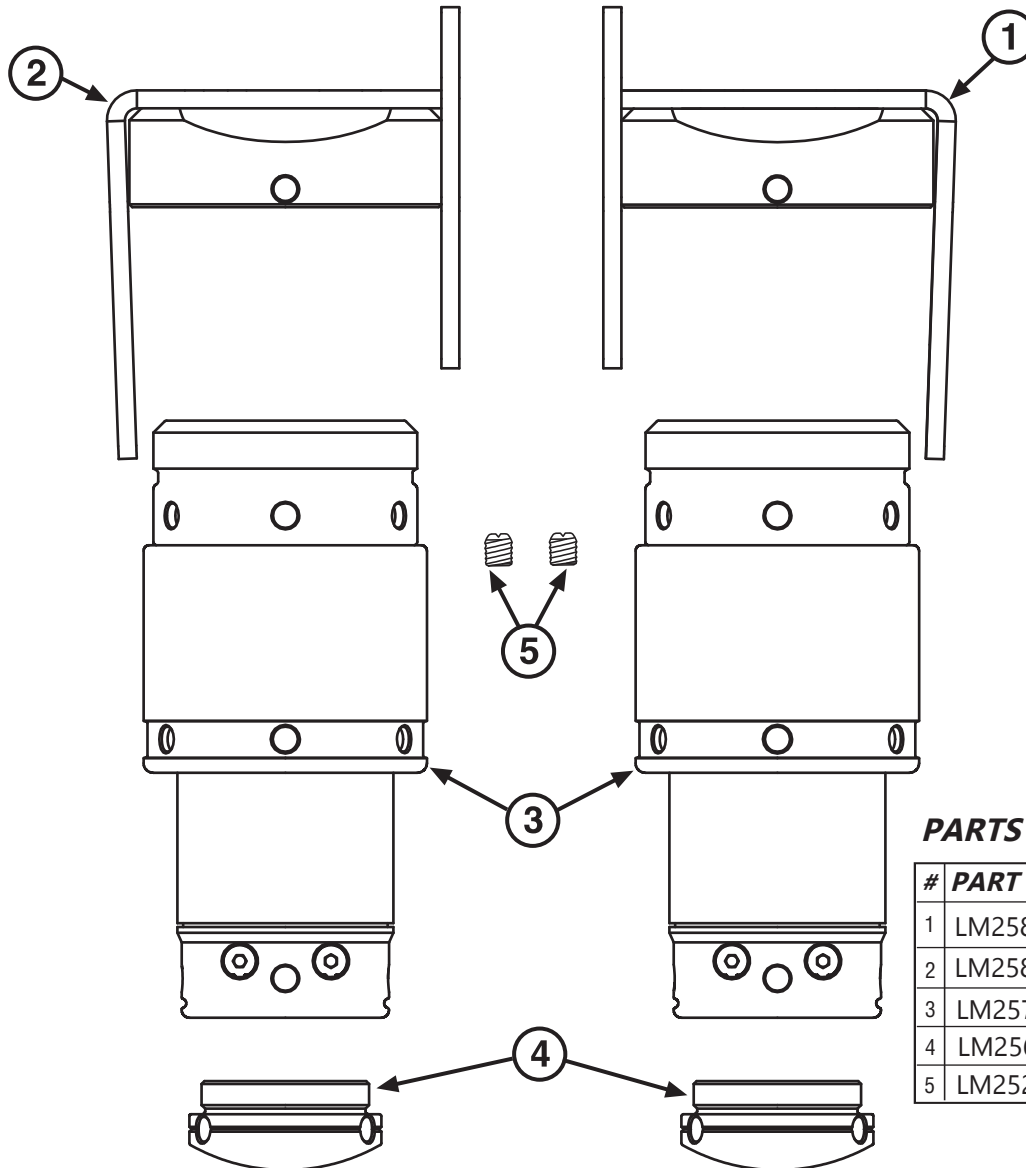
INSTRUCTION SHEET
JOUNCESHOCK™ SYSTEM (FRONT)
2006-2010 HUMMER H3

This part should only be installed by personnel who have the necessary skill, training and tools to do the job correctly and safely. Incorrect installation can result in personal injury, vehicle damage and/or loss of vehicle control.

Read instructions completely before beginning installation.

REQUIRED TOOLS:

- Welder and welding equipment
- Drill motor and drill index
- Metric sockets and wrenches
- 1/4" Pin style spanner wrench
- Spray paint
- Cutting tools (air grinder with cut off wheel, torch, or reciprocating saw)
- Floor jack with jack stands
- 100 ft-lb Torque wrench
- 1/8" Hex key
- Medium strength thread locker (Blue Loctite)



PARTS LIST

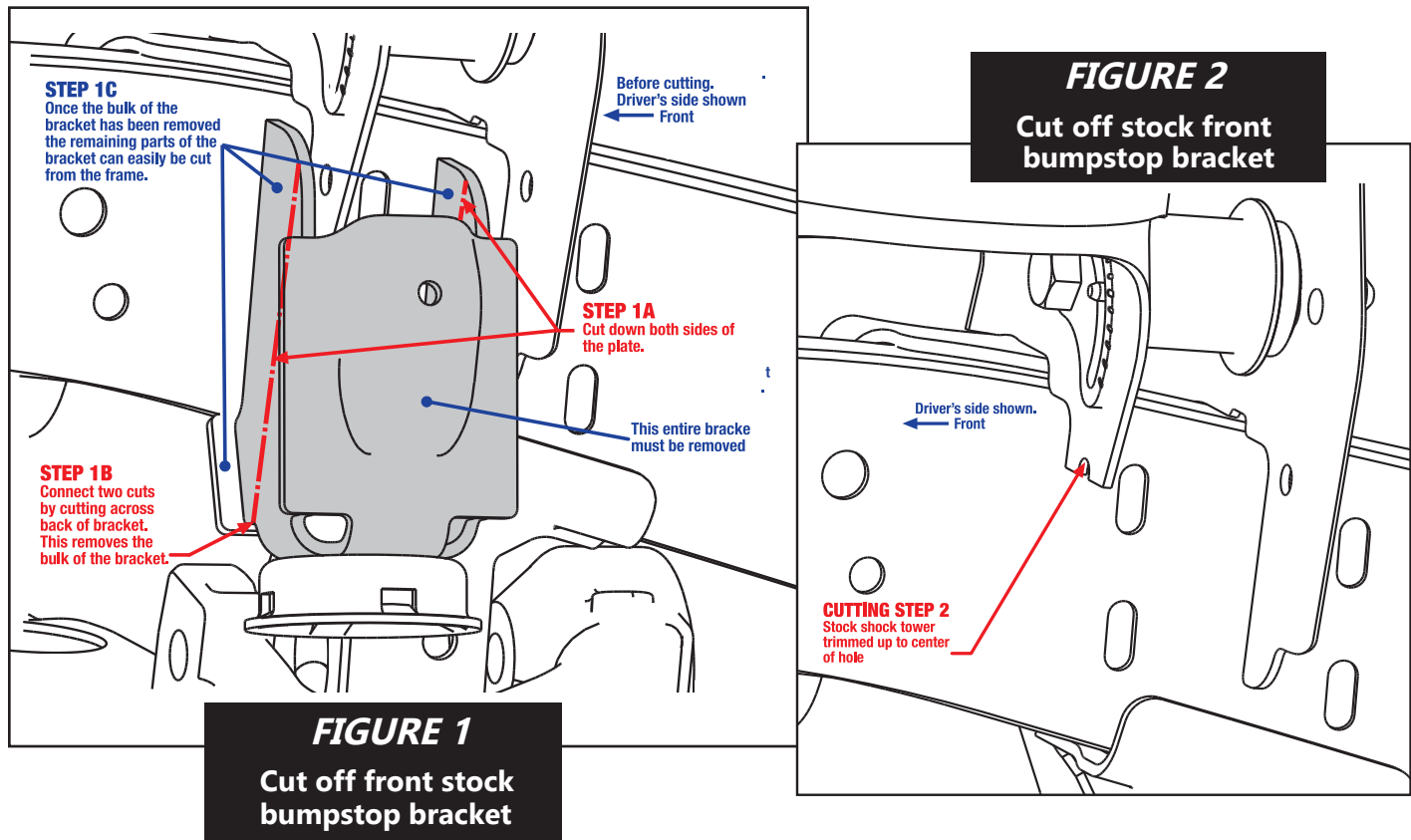
#	PART NO.	DESCRIPTION	QTY
1	LM2587211	Left JS Mount Assembly	1
2	LM2587212	Right JS Mount Assembly	1
3	LM25710	1.5" Travel JounceShock	2
4	LM25602	Domed Foot, Delrin	2
5	LM252551	1/4-20 x 5/16" Set Screw	2

PART NO. LM25872 INSTRUCTION SHEET - CONTINUED

JOUNCESHOCK SYSTEM (FRONT) 2006-2010 HUMMER H3

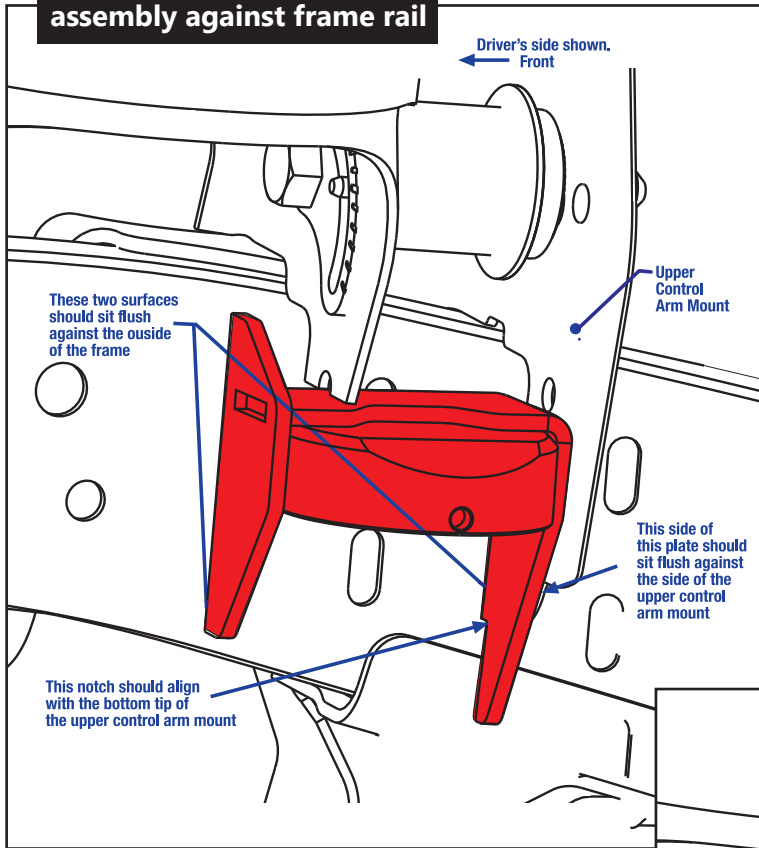
INSTALLATION PROCESS:

1. Confirm that you have all necessary parts and tools as shown on parts and tools list.
2. Safely raise vehicle per manufacturer's specifications and remove front wheels.
3. Pry stock urethane bumpstops from cups on frame. Urethane bumpstop will not be re-installed.
4. Loosen and remove torsion bar adjusters, remove front shocks, and cover half shaft boots with weld resistant shield.
5. Cut off stock front bumpstop bracket as shown in **Figure 1** and **Figure 2**.
6. Hold JS mount assembly up to frame rail as shown in **Figure 3**. Mount assembly back should sit flush against outer surface of frame rail. The notch in rear side plate should align with the bottom of rear leg of stock upper control arm mount. Rear side plate should be flush against inside surface of rear leg of stock upper control arm mount.
7. Welding will be required as shown in **Figure 4**. Note where welding will be needed and remove paint and undercoating from frame to ensure good quality welds.
8. Clamp JS mount assembly in proper location and tack weld mount assembly to frame.
9. Install domed foot onto JounceShock shaft end using 1/4" pin style spanner wrench.
10. Temporarily thread cylinder end of 1.5" JounceShock into JS mount assembly until it bottoms. Check for good alignment between JounceShock and top surface of lower control arm.
11. Once alignment is correct, remove JounceShock and weld JS mount assembly to frame as shown in **Figure 4**.
12. Paint welded areas to limit corrosion.
13. Re-thread JounceShock into JS mount assembly until it bottoms. Apply a small dab of medium strength thread locker (Blue Loctite) to the 1/4-20 x 5/16" set screw and install into mount assembly snug tight using 1/8" hex key.
14. Finished install should look as shown in **Figure 5**.
15. Re-install shocks and torsion bar adjusters and torque all fasteners to manufacturer's specifications.
16. Re-install front wheels and torque lug nuts to manufacturer's specifications.
17. Check and re-torque all fasteners after 100 miles.



**PART NO. LM25872 INSTRUCTION SHEET - CONTINUED
JOUNCESHOCK SYSTEM (FRONT) 2006-2010 HUMMER H3**

FIGURE 3
Placement of JS mount
assembly against frame rail



NOTE: Supplied parts have been painted with Steel-It weldable polyurethane paint to prevent corrosion. After welding part into position, clean and paint weld and bare areas of part and frame with an automotive grade paint to prevent corrosion.

FIGURE 4
Welding positions

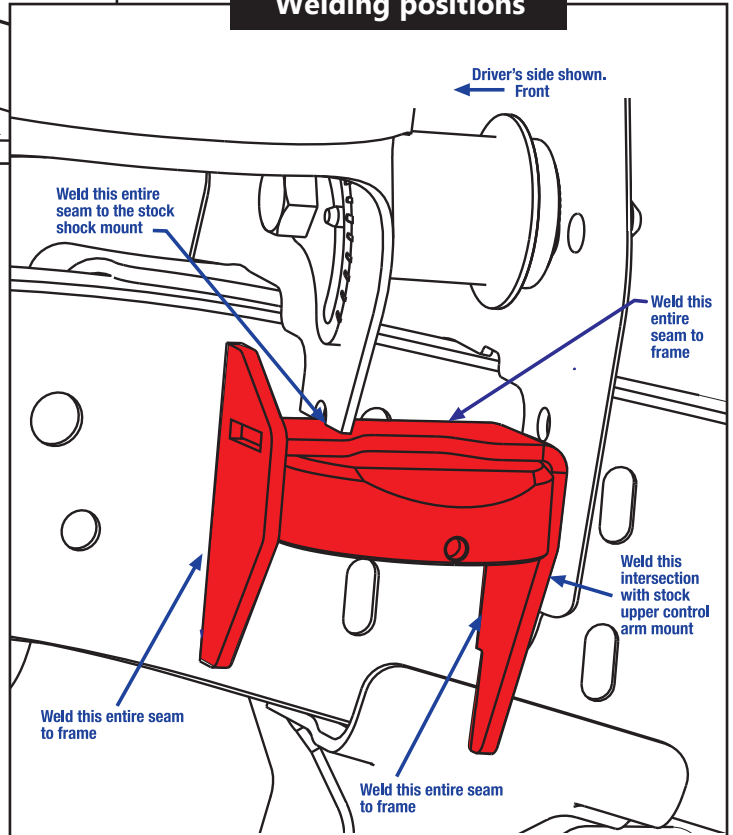


FIGURE 5
Finished installation

PART NO. LM25872 INSTRUCTION SHEET - CONTINUED

JOUNCESHOCK SYSTEM (FRONT) 2006-2010 HUMMER H3

WHAT TO EXPECT FROM YOUR JOUNCESHOCK SYSTEM:

The JounceShock is the core of a secondary suspension system that dramatically increases the capacity of your vehicle's suspension. Most systems are designed such that the JounceShocks do not engage the suspension of your vehicle at ride height. Therefore, the system does not usually alter the ride height or on-road ride quality of your vehicle. When you have a heavy payload or take your vehicle off-road, your suspension will compress more and engage the JounceShocks. When the suspension engages the JounceShocks, you may hear the initial contact. This is normal and is an indication that the JounceShocks are being applied. When the vehicle is driven off-road you will notice a couple of performance gains: First, as you drive the vehicle over rough terrain, you will not feel a distinct hard suspension bottoming when compared with the unmodified vehicle. Also, you may realize that the vehicle has more "Gross Vehicle Motion Control" due to the characteristic exponential air spring curve and the critical damping of the JounceShock units. These changes significantly enhance the performance and durability of the vehicle, as well as the comfort level of the occupants. This added capacity can be misleading and care should be taken to learn the new limits of your vehicle without damage to the vehicle itself. For more discussion on JounceShock function and performance gains please visit our website at: WWW.LANTERNMARK.COM

H3 JounceShocks are supplied with optimal settings for most vehicle off-road uses. For more information on how to custom tune JounceShocks, please refer to the *Custom Application Instruction Sheet* at WWW.LANTERNMARK.COM/STORE/JOUNCESHOCK

Check out WWW.LANTERNMARK.COM/STORE for replacement parts.

JOUNCESHOCK REBUILD KIT
PART NO. LM25712



DOMED FOOT - DELRIN
PART NO. LM25602



PIN WRENCH SET
PART NO. LM25520



There is no warranty stated or implied due to the inability to monitor the part's modification, installation, and use, except that Lanternmark Industries Inc warrants its products to be free from defects in material and workmanship for 90 days after purchase under normal use. In that case, parts returned must be determined by Lanternmark to be defective and Lanternmark's obligations under that warranty are solely limited to repairing or replacing, at its option, any part proven defective.

Final determination of the suitability of the parts for use contemplated by the buyer is the sole responsibility of the buyer. Lanternmark Industries Inc shall not be liable for any special, direct, indirect, incidental, or consequential damages that might be claimed as a result of the failure of any part, including claims for delay, loss of profits or labor. Lanternmark Industries Inc shall not be liable for any damage or injury to persons or property resulting from improper installation or misuse of any part subject to this warranty. There are no other warranties expressed or implied extending beyond those set forth above.